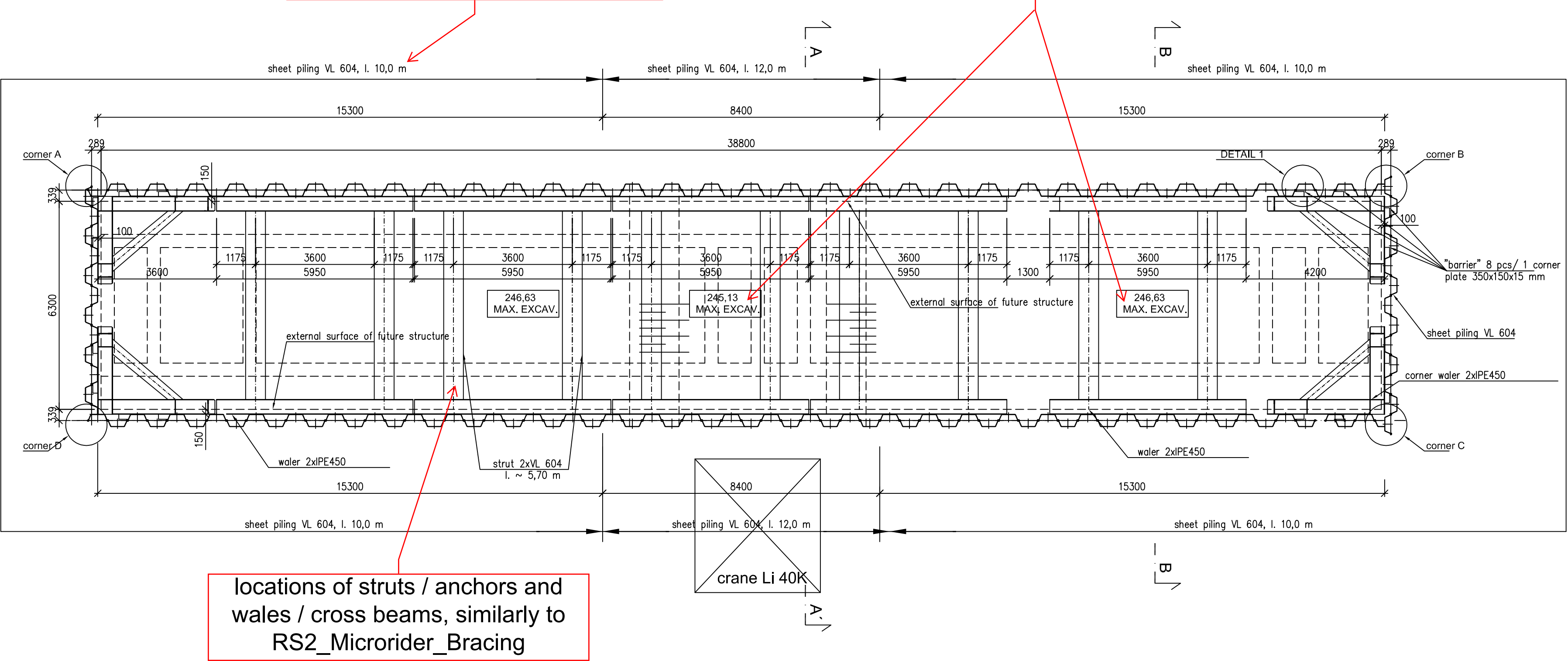


LAYOUT
M 1:100

Plan view of the pit

indication of types of sheet piling elements, segmented with respect to the different lengths of sheet pile elements

final excavation level; or more excavation levels, if the pit is divided into different levels of excavation

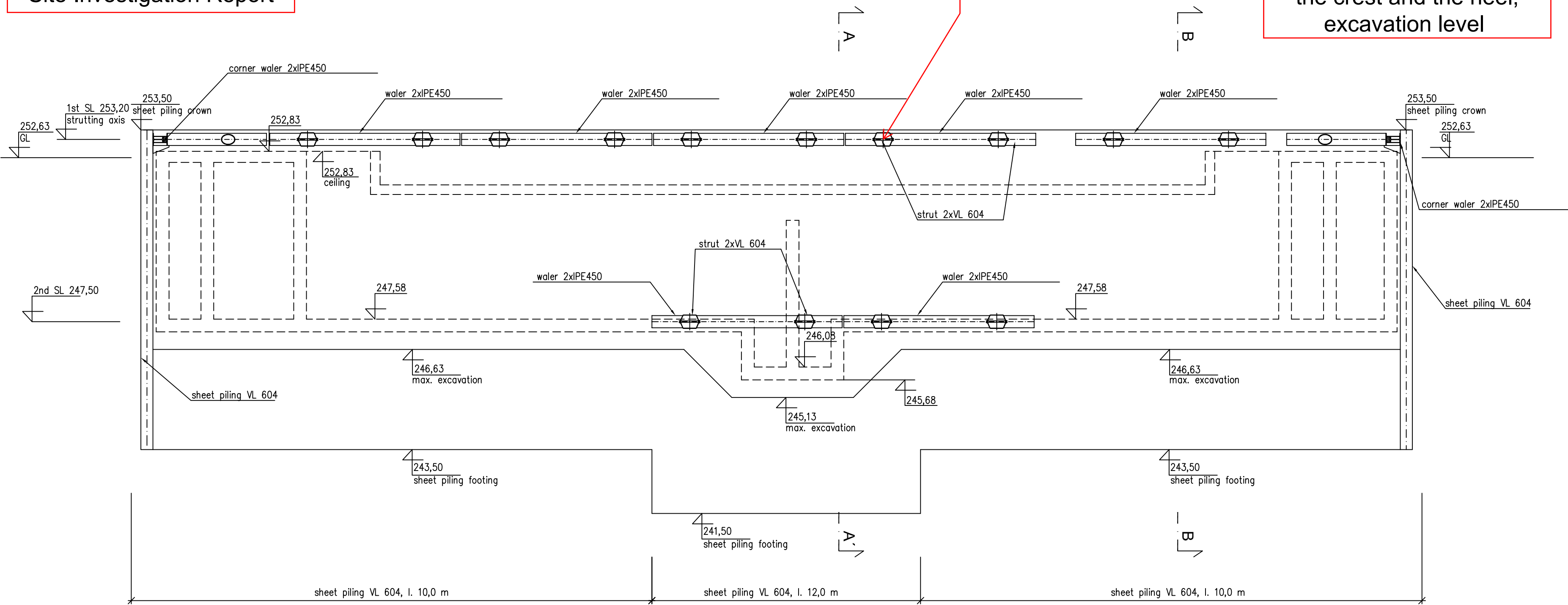


locations of struts / anchors and wales / cross beams, similarly to RS2_Microrider_Bracing

LONGITUDINAL SECTION
M 1:100

anchor levels, levels of strutting,
anchors with indications of free /
fixed lengths, locations of the roots
and their lengths, indication of types
of struts and their lengths

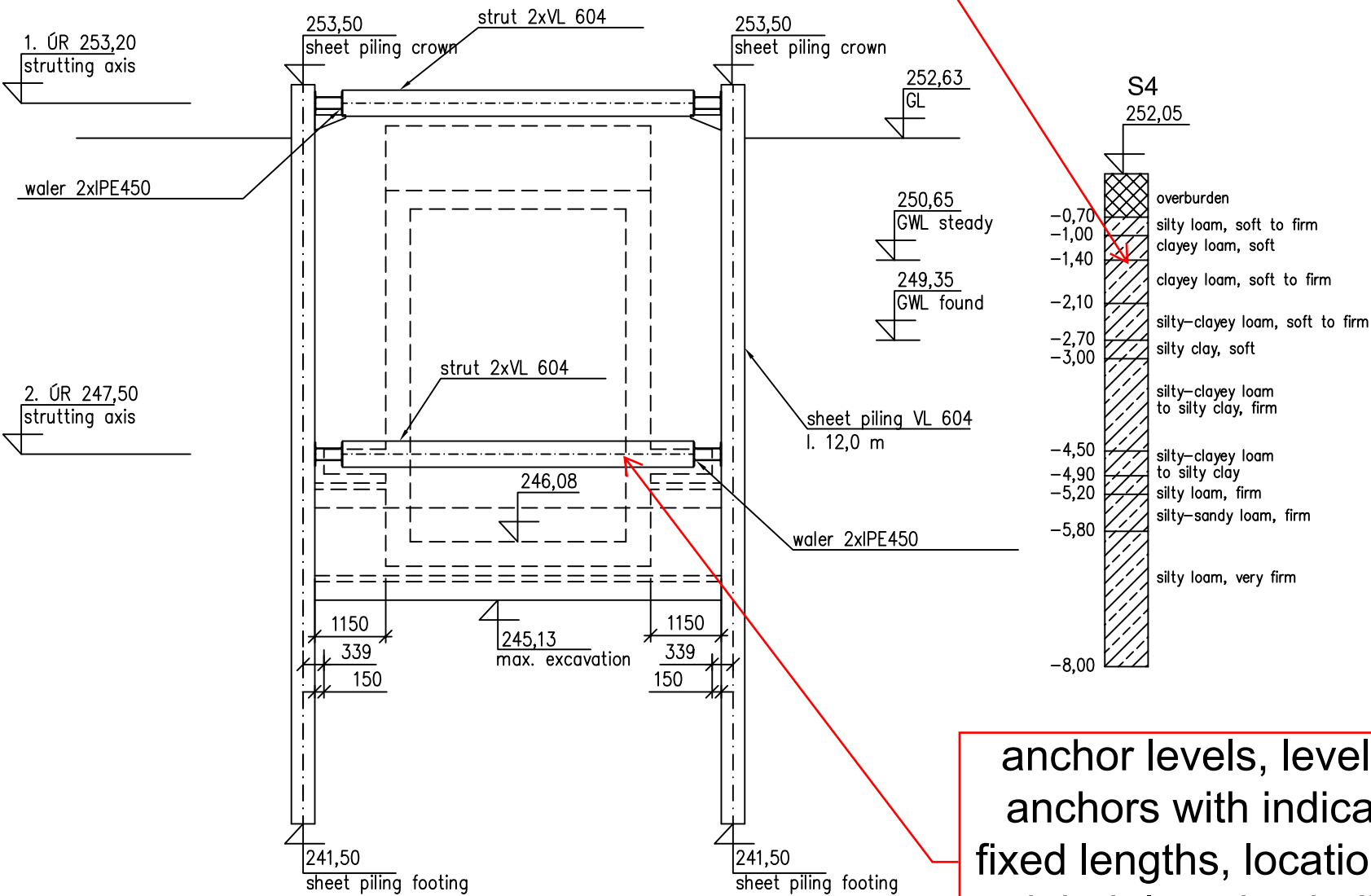
types of sheet piling
elements, lengths, level of
the crest and the heel,
excavation level



CROSS SECTION A - A'
M 1:100

types of sheet piling elements, lengths, level of the crest and the heel, excavation level

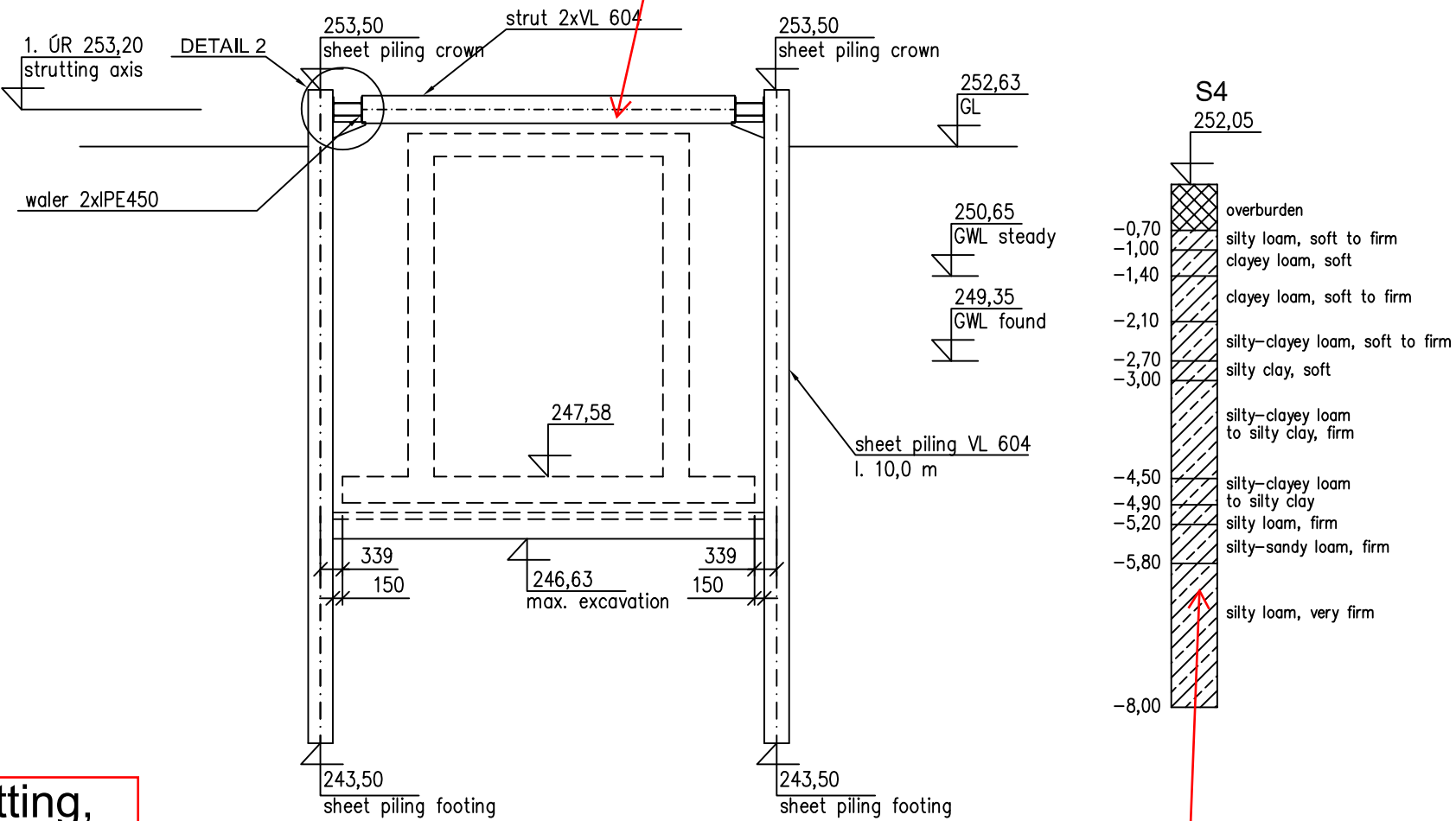
recommended: typical soil/rock sequence - source: Site Investigation Report



anchor levels, levels of strutting, anchors with indications of free / fixed lengths, locations of the roots and their lengths, indication of types of struts and their lengths

CROSS SECTION B - B'
M 1:100

anchor levels, levels of strutting, anchors with indications of free / fixed lengths, locations of the roots and their lengths, indication of types of struts and their lengths



types of sheet piling elements, lengths, level of the crest and the heel, excavation level

recommended: typical soil/rock sequence - source: Site Investigation Report